

Trust HQ
Rikenel
Montpellier
Gloucester
GL1 1LY

Direct Tel: 01452 894264
E-mail: 2gnft.Information-Freedom@nhs.net
Website: www.2gether.nhs.uk

Date 07 April 2017

Freedom of Information Request – Ref: FOI 001-17

Thank you for your recent Freedom of Information request for a copy of the organisation chart 2gether NHS Foundation Trust for Gloucestershire. Please find a PDF of the Trust Organisational Chart attached, please note that the Trust Board covers the areas of Gloucestershire and Herefordshire.

Should you have any queries in relation to our response in this letter, please do not hesitate to contact me. If you are unhappy with the response you have received in relation to your request and wish to ask us to review our response, you should write to:-

Anna Hilditch
Assistant Trust Secretary,
2gether NHS Foundation Trust
Rikenel
Montpellier
GLOUCESTER GL1 1LY
Tel: 01452 894165
E-mail: anna.hilditch@nhs.net

If you are not content with the outcome of any review, you may apply directly to the Information Commissioner's Office (ICO) for further advice/guidance. Generally, the ICO will not consider your case unless you have exhausted your enquiries with the Trust which should include considering the use of the Trust's formal complaints procedure. The ICO can be contacted at: The Information Commissioner's Office, Wycliffe House, Water Lane, Wilmslow, Cheshire SK9 5AF.

Yours sincerely,

Lisa Evans

LISA EVANS
Information Governance Officer
2gether NHS Foundation Trust

Copyright & Reuse of Public Sector Information

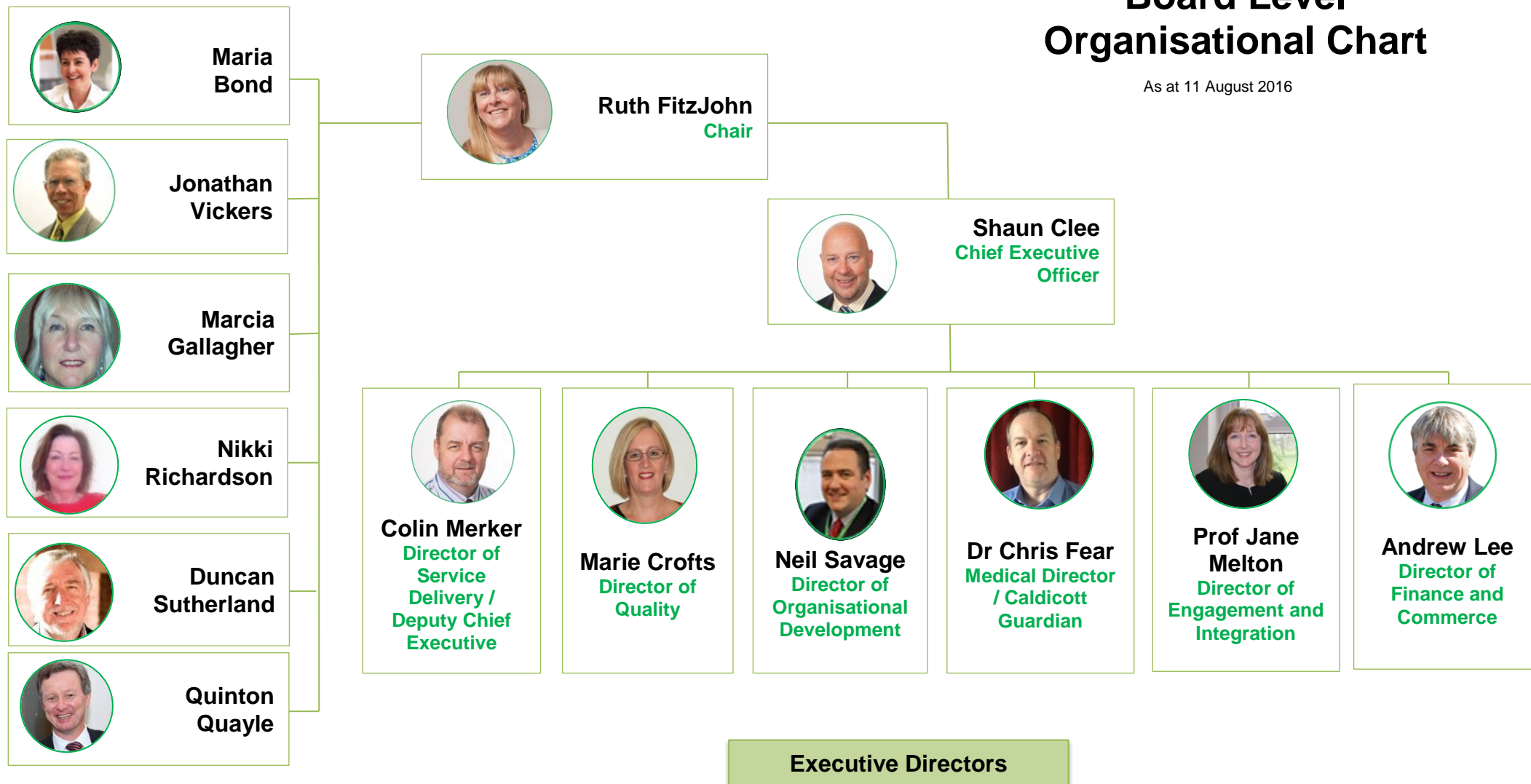
The information and material that is routinely published is subject to ²gether NHS Foundation Trust's copyright unless otherwise indicated. Unless expressly indicated on the material to the contrary, it may be reproduced free of charge in any format or medium, provided it is reproduced accurately and not used in a misleading manner. Where any of the copyright items are being re-published or copied to others, you must identify the source of the material and acknowledge the copyright status. Permission to reproduce material does not extend to any material accessed through the Trust website that is the copyright of third parties. You must obtain authorisation to reproduce such material from the copyright holders concerned. For further guidance on a range of copyright issues, see the Office of Public Sector Information (OPSI) web site: www.opsi.gov.uk/advice/crown-copyright/copyright-guidance/index.htm

or write to: OPSI, 102 Petty France, London SW1H 9AJ.

Non-Executive Directors

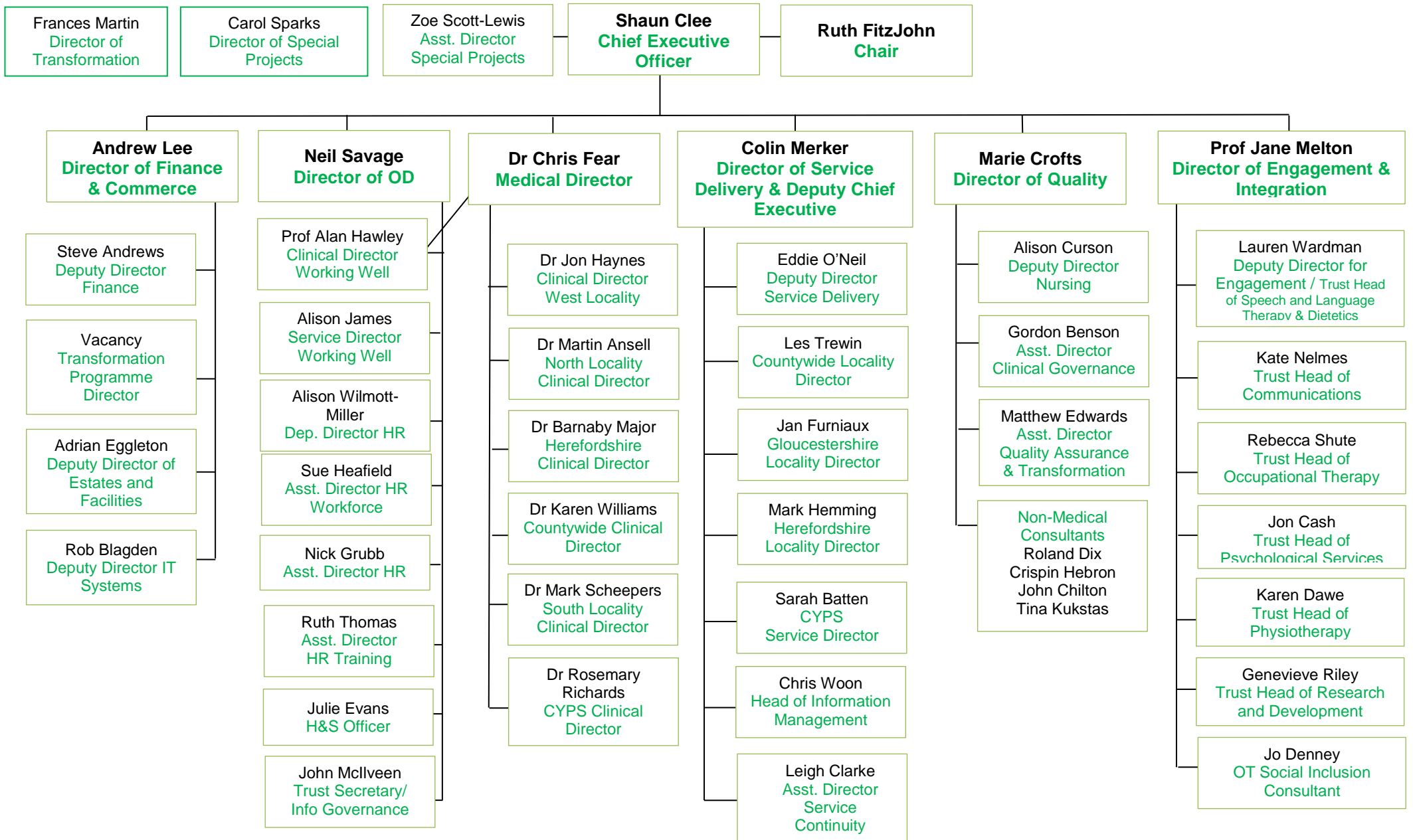
Board Level Organisational Chart

As at 11 August 2016



Executive Directors

Executive Level



Executive Responsibilities

Shaun Clee Chief Executive

PA: Becky Phillips

- Strategic leadership of Organisation's Executive Team
- Developing strategic vision of the organisation
- Developing the culture of the organisation
- Managing external relationships
- Accountable Officer

Ruth FitzJohn Chair

PA: Amanda Valder

Andrew Lee Director of Finance & Commerce

PA : Lin Lloyd

Strategic lead for:

Commercial Strategy
Corporate Strategy
Estates Strategy
Finance Strategy
IT Strategy
Marketing Strategy
Partnership Strategy

- Programme Management
- Strategic Planning
- Service Planning
- Tender coordination
- Monitor submission
- Business Management
- Financial Management
- Financial Accounts
- Management of SLA/contract
- Management of Sub-contracts
- Internal and External Audit
- Counter Fraud
- Procurement
- IT
- Estates & facilities
- Telephony
- Security
- Domestic Services
- Catering
- Marketing

Development Committee lead

Neil Savage Director OD

PA : Jane Auker-Howlett

Strategic lead for:

OD Strategy

- Organisational development
- HR
- Working Well (OH services)
- HR management
- Diversity/Equal Opportunities
- Medical staffing
- Workforce planning
- Health & Safety
- Board Secretariat
- Training and Development
- Litigation/Legal
- Human Rights
- Corporate Governance
- Support Board and Council of Governors
- Human Rights

John McIlveen Trust Secretary

- Litigation/Legal
- Corporate Governance
- Board Governance

Dr Chris Fear Medical Director

PA: Karen Small

Strategic lead for:

- Medical Professional leadership
- Safety
- Research & Development
- Clinical Audit
- Medical Education
- Medicines Management
- **Caldicott Guardian**
- Clinical effectiveness via Practice Development
- Serious Incident review
- Enabling service development via professional development

Marie Crofts Director of Quality

PA: Colette Etheridge/
Simon Ball

Strategic lead for:

Nursing Strategy

- Professional leadership for Nursing
- Professional leadership for Social Care
- Quality Reports
- Compliance – CQC
- Safety
- Medicines management
- Safeguarding
- Control of Infection
- Clinical Governance – audit and assurance
- Nurse Training

Governance Committee Lead

Prof Jane Melton Director of Engagement and Integration

PA: Sarah Townsend

Strategic lead for:

Engagement & Communication Strategy
Practice Development Strategy
AHP Strategy
Research Strategy

- Practice Development
- Research & Development
- Public engagement
- Social Inclusion
- Membership
- Healthwatch
- HSCOSC
- Communications
- AHP Leadership
- PPI
- Service Experience

Colin Merker Director of Service Delivery & Deputy Chief Executive

PA: Amanda Valder

Strategic lead for:

Clinical Services Strategy
Service Strategy
Information Strategy
Technology Strategy

- WAA
- OA
- SMS
- LDS
- CAMHS
- Operational Business Plans
- MH Act Managers Committee
- Health Records
- Emergency Planning
- Patient Environment
- Information
- Operational performance management
- SIRO

Delivery Committee lead

MH Scrutiny Committee lead