

Trust HQ
Rikenel
Montpellier
Gloucester
GL1 1LY

Direct Tel: 01452 894266
E-mail: 2gnft.Information-Freedom@nhs.net
Website: www.2gether.nhs.uk

26 April 2018

Freedom of Information Request – Ref: FOI 025-1819

Thank you for your recent Freedom of Information request about the Trust's Organisational Chart. Please find the Trust's Organisational Charts for Gloucestershire, Herefordshire and Countywide and Children's and Young People's Services attached.

Should you have any queries in relation to our response in this letter, please do not hesitate to contact me. If you are unhappy with the response you have received in relation to your request and wish to ask us to review our response, you should write to:-

Anna Hilditch
Assistant Trust Secretary,
2gether NHS Foundation Trust
Rikenel
Montpellier
GLOUCESTER GL1 1LY
Tel: 01452 894165
E-mail: anna.hilditch@nhs.net

If you are not content with the outcome of any review, you may apply directly to the Information Commissioner's Office (ICO) for further advice/guidance. Generally, the ICO will not consider your case unless you have exhausted your enquiries with the Trust which should include considering the use of the Trust's formal complaints procedure. The ICO can be contacted at: The Information Commissioner's Office, Wycliffe House, Water Lane, Wilmslow, Cheshire SK9 5AF.

Yours sincerely,

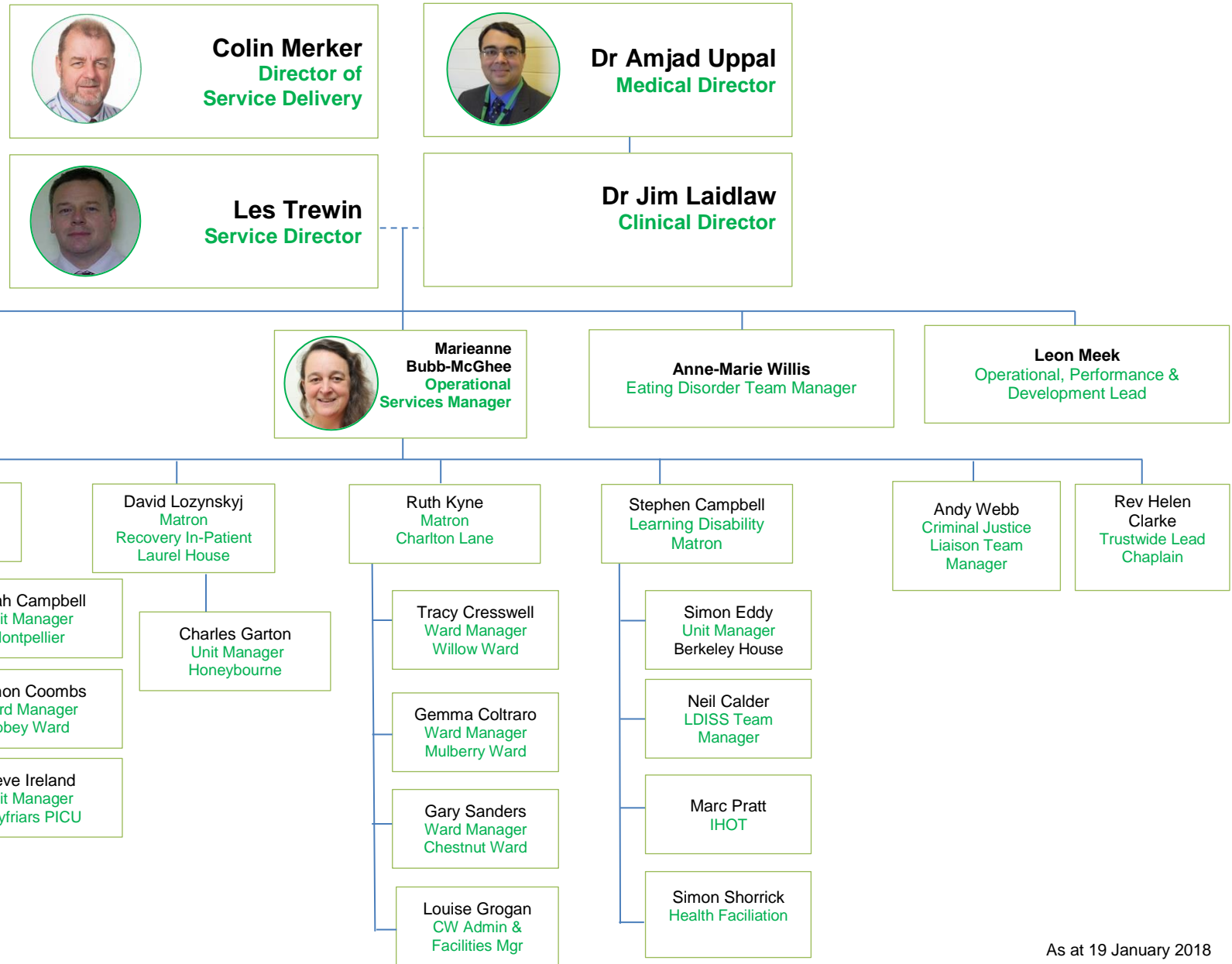
Lisa Evans

LISA EVANS
Information Governance Officer
2gether NHS Foundation Trust

Copyright & Reuse of Public Sector Information

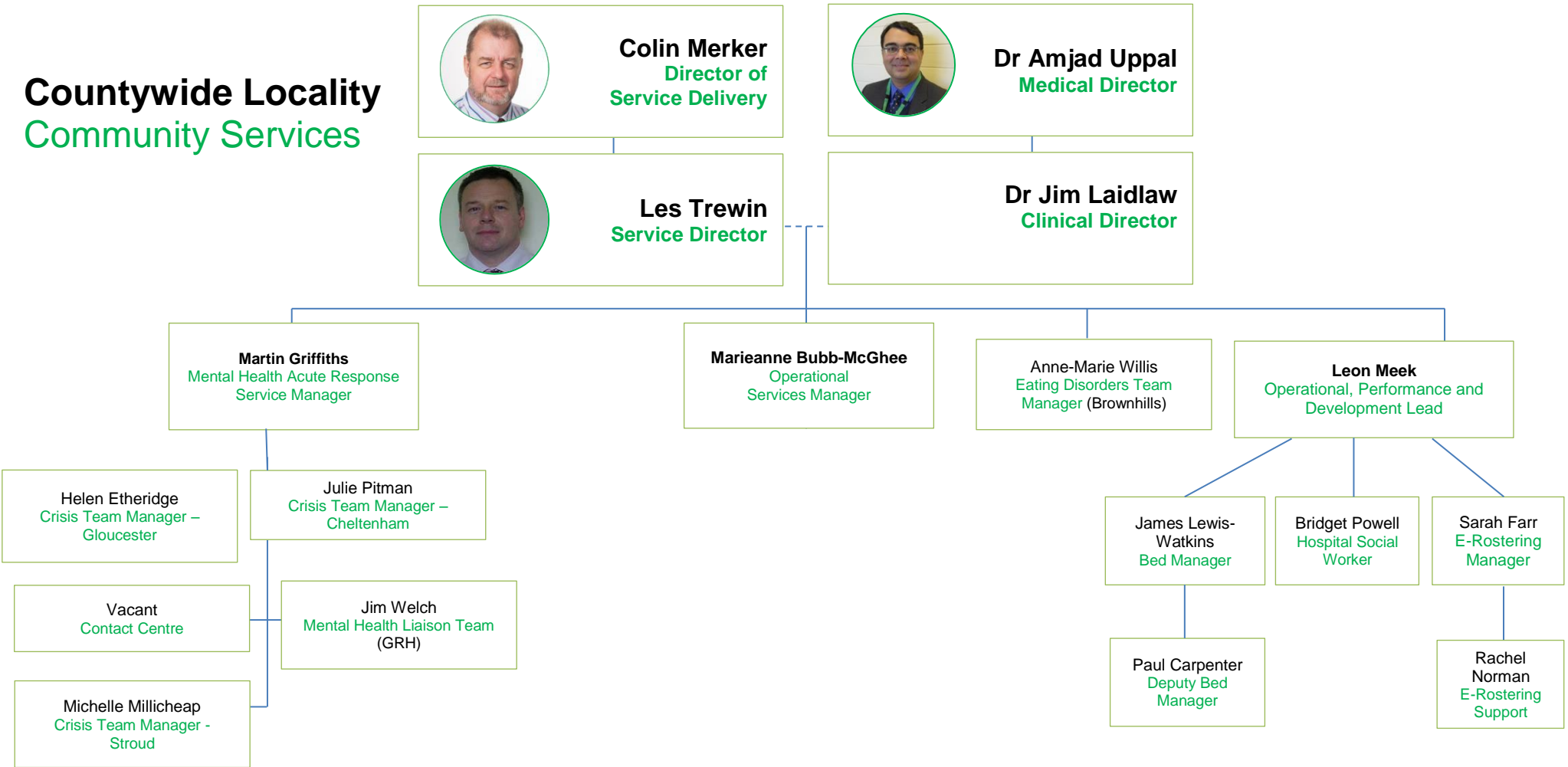
The information and material that is routinely published is subject to 2gether NHS Foundation Trust's copyright unless otherwise indicated. Unless expressly indicated on the material to the contrary, it may be reproduced free of charge in any format or medium, provided it is reproduced accurately and not used in a misleading manner. Where any of the copyright items are being re-published or copied to others, you must identify the source of the material and acknowledge the copyright status. Permission to reproduce material does not extend to any material accessed through the Trust website that is the copyright of third parties. You must obtain authorisation to reproduce such material from the copyright holders concerned. For further guidance on a range of copyright issues, see the Office of Public Sector Information (OPSI) web site:

Countywide Locality Inpatients



As at 19 January 2018

Countywide Locality Community Services



As at 19 January 2018

Children and Young People Service

John Campbell
Director of Service Delivery

Dr Amjad Uppal
Medical Director

Julie Gannaway-Pitts
Personal Assistant



Sarah Batten
CYPS Service Director



Dr Rosemary Richards
Clinical Director

Debra Jackson
Personal Assistant

Karen Jones
Professional Co-Ordinator Psychology



Melanie Harrison
Service Manager

Wendy Wallin
Interim Service Manager Hereford (CAMHS)



Ruth Turnbull
Lead Nurse

Julie Pointer
Admin Support Manager

Maria Price-Griffiths
Level 2 Service Team Manager
• Primary Mental Health
• Parenting Programme

Diana Scully
VCS (incorporating complex and vulnerable) Team Manager
• Youth Support
• YP Substance Misuse
• Harmful Sexual Behaviours
• Children in Care
• Complex Engagement
• Family Court Work
• Infant Mental Health
• Hospital Education

Vulnerable Children Multi-Agency Strand
• Functional Family Therapy (Layla Betteridge)
• Social Work (PODS) (Liz Davis)
• Turnaround for Children (TACS) (Vacant)

Chris David
Level 3 Service Team Manager
• Level 3
• Paediatric Liaison
• Autistic Spectrum Disorder Service

Sally Powell
Learning Disability Service Team Manager

Kirsty Pritchard
Operational Lead

In addition to clinical duties, provides a co-ordinating function of their profession and contributes expertise to the management and leadership of the Directorate

Partnership Working
Action for Children (AfC)
Teens in Crisis (TiC+)

Gloucestershire Locality


As at April 2018



Colin Merker
 Director of Service Delivery / Deputy Chief Exec



Debbie Furniss
 Governance Lead, Localities/Countywide



Jan Furniaux
 Service Director



Nathan Gregory
 Performance & Development Lead

Clinical Directors
 Dr Nick Ardagh-Walters
 Dr Jon Haynes
 Dr Mark Scheepers

Sarah Bennion
 Head of Professional Social Care
 (Ambrose House)

Lou Pickering
 Community Service Manager – North
 (Sherbourne House, CLH)

Jonathan Thomas
 Community Service Manager – South
 (Weaver's Croft, Stroud)

Andy Telford
 Community Service Manager – West
 (Pullman Place)

Rosemary Neale
 Community Service Manager – Entry Level
 (Ambrose House)

Tim Maddocks
 Social Care Specialist South and West
 (Weavers Croft)

Reann Goulding
 One Stop Team
 Later Life & Tewks Recovery
 (Avon House)

Jo Greenwood (secondment)
 One Stop Team
 Recovery / CPI
 (Weaver's Croft)

Jeanette Waldman
 One Stop Team
 Recovery 1&3 Gloucester
 (Pullman Place)

Ruth Eustace
 GRIP Team Manager
 (Pullman Place)

Anne Jones (secondment)
Rebecca Barrow (Mat leave)
 Social Care Specialist North and West
 (Sherbourne House)

Louise Cleveland
 One Stop Team Chelt & Nth
 Cots Recovery
 (Leckhampton Lodge)

Tony Warnes
 One Stop Team
 Later Life / LD
 (Weaver's Croft)

Mandy Carpenter
 One Stop Team
 FoD Recovery / Later Life
 (Colliers Court, FoD)

Jennie Christer
 West 2 MHICT and ASC Lead
 (Ambrose House)

Amy Alexander
 AMHP Lead

Cathy Newman
 AOT & LD
 (Leckhampton Lodge)

Cathie Hole
 One Stop Team
 Recovery & AOT
 (Weaver's Croft & Memorial Centre, Cirencester)

Kate Parkhurst
 One Stop Team
 AOT West / Recovery 2
 (Pullman Place)

Carla Bailey
 IAPT Herefordshire Clinical Lead
 (Belmont)

Michelle White (mat leave – recruitment underway)
 Countywide Reassessment Lead

Steve Shelley-King
 MMS West CHS Teams
 (Fritchie Centre)

Katie Conlon
 Accommodation
 (Fieldview)

Denise Evans
 Later Life / Glos LD
 (Pullman Place)

Mark Stubbings
 North Intermediate Care Team
 (Stanway Centre, Laurel House)

Peter Fitzpatrick
 MM2G/MAS/CDN
 (Fritchie Centre)

Mark Adams
 Lead Nurse
 (Weaver's Croft)

Helen Maplestone
 Vocational Services Manager
 CLDT FoD / CPI West
 (Pullman Place)

Julie White
 South Intermediate Care Team/ADHD
 (Southfields)

Colin Baker
 Lead Nurse
 (Sherbourne House, CLH)

Karen Bennett
 Support Services Manager
 (Weaver's Croft)

Julie-Anne Gwilym
 (Forest CLDT)

Gabby Cooper
 MHICT West 1 & Admin Hub
 (Denmark Road)

Carol Meredith
 Support Services Manager
 (Sherbourne House, CLH)

Trish Butler
 Perinatal MH Team
 (Weavers Croft, Stroud)

Caroline Andrews
 Lead Nurse
 (Pullman Place)

Matthew Hood
 Support Services Manager
 (Ambrose House)

Sarah Smith
 Support Services Manager
 (Pullman Place)

HEREFORDSHIRE LOCALITY

